

# Log4OM and Icom



## Set the Icom IC-7300 and IC-9700 with log4OM

I make this small guide for all Log4OM enthusiasts, to make the two devices communicate correctly with this very powerful software on the Windows platform.

### What to do on the PC

- After connecting the printer cables to the two devices, and installing the relative drivers.
- Enable, in Folder Options, View, the view of hidden files, file extensions and view of system hidden files.
- Download the latest version of Log4OM version 2 (<https://www.log4om.com/download/>) and install it on the PC; The software also installs the OmniRig 1.2 program;
- For those who should download the OmniRig software, here (<http://dxatlas.com/Download.asp>)
- For those who should download the OmniRig software, here (<http://dxatlas.com/Download.asp>)
- Unzip the folder, and copy the contents of the .ini files to **C:\Program Files (x86)\Afreet\OmniRig\Rigs**
- Download the Rig file for IC9700 from the HB9RYZ website at <http://www.hb9ryz.ch/omnirig/index.html>. A browser page will open with all the code. You will need to copy the entire content and save it in a .txt text file
- Rename the text file to IC-9700PST.ini
- Copy the IC-9700PST.ini file to **C:\Program Files (x86)\Afreet\OmniRig\Rigs**

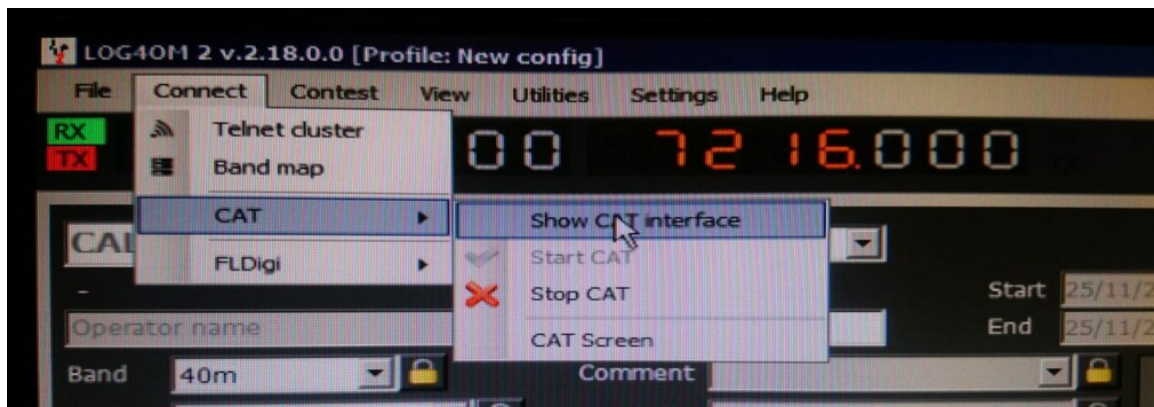
- **Good!** Now you can disable, in Folder Options, View viewing of hidden files, file extensions and viewing of hidden system files; and restore the PC to standard conditions.

## Icom settings

The Icom devices must be properly set up to be able to give data to Log4OM, and specific settings must be given to them.

IC 7300	IC 9700
<p>Enter the Menu: Set / Connectors / CI-V and set the following:</p> <p>CI-V Baud Rate 19200            CI-V Address 94h            CI-V Transceive OFF            USB/LAN/ REMOTE / Transceiver Address 00h            CI-V Output (for ANT) OFF            CI-V USB Port Link to (REMOTE)            CI-V USB Baud Rate Auto            CI-V USB Echo Back ON</p>	<p>Enter the Menu: Set / Connectors / CI-V and set the following:</p> <p>CI-V Baud Rate AUTO            CI-V Address A2h            CI-V Transceive ON            USB/LAN/ REMOTE / Transceiver Address 00h            CI-V USB Port Unlink from [REMOTE]            CI-V USB Baud Rate Auto            CI-V USB Echo Back ON            CI-V DATA Baud Rate 9600            CI-V DATA Echo Back OFF</p>

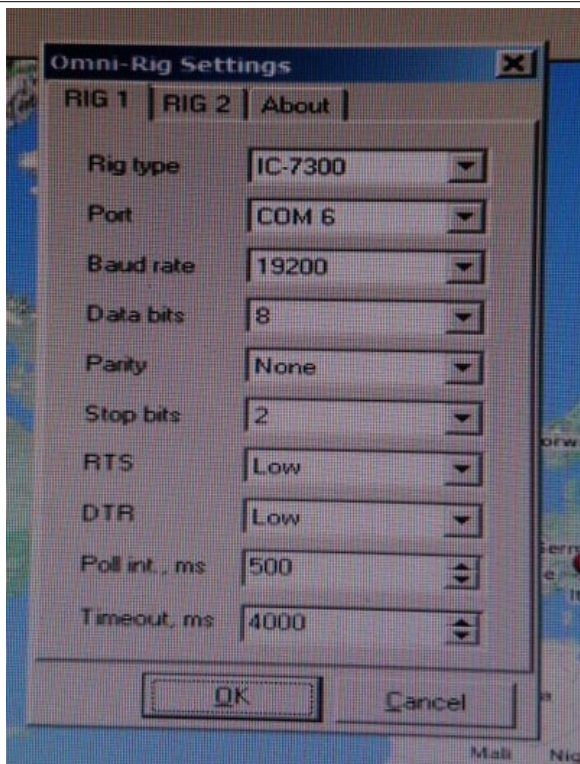
- **Good!!** **Now start Log4OM**
- **On Connect, click CAT and Show CAT interface**



- **The OmniRig mask should appear.**

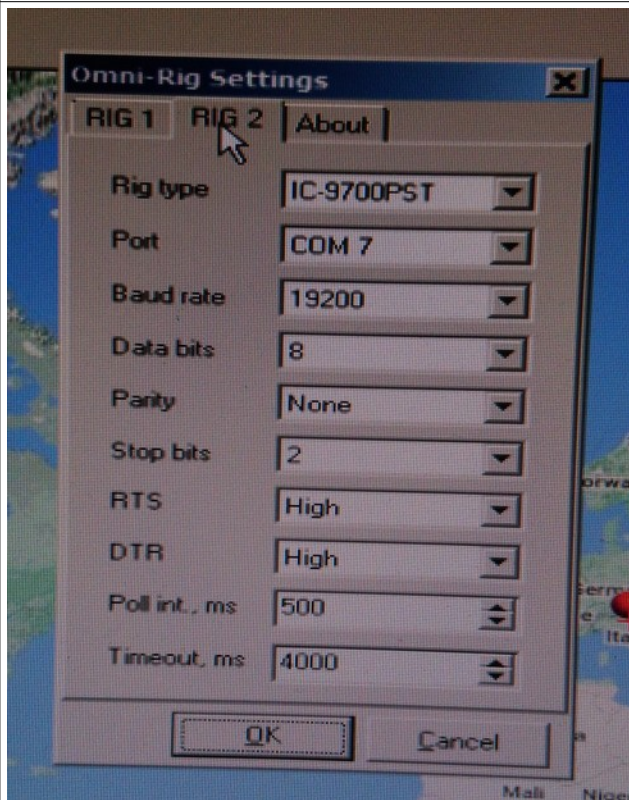
**FOLLOWS**

Ic-7300



Choose: **IC-7300** and its **COM** port, other data should be fine

IC-9700



Choose: **IC-9700PST** and related **COM** port, other data should be fine

Greetings and good DX's

IU3OYH  
Delfino Segala

**ps: sorry for the somewhat approximate translation.**